

ITEM NO. \_\_\_\_\_  
 PROJECT \_\_\_\_\_  
 LOCATION \_\_\_\_\_  
 DATE \_\_\_\_\_ QTY. \_\_\_\_\_



MCATD-124S

*Features the lowest entry point in the industry allowing easier access for small children*



# MCATD SERIES

## Air-Thru Dual Access Milk Coolers

### MODELS

- MCATD-084S
- MCATD-124S
- MCATD-164S

## FEATURES

### CONSTRUCTION

- Dual access
- Stainless steel interior and exterior
- Cabinet is insulated with foamed-in-place polyurethane
- Four easy roll swivel casters, two locking
- Epoxy-coated heavy-duty floor racks
- NSF-listed drain
- NSF-listed thermometer

### DOOR

- Door is insulated and has gaskets
- Chrome-plated hinges

- Fold-back door locks to safely stay open during use
- Key locks

### REFRIGERATION

- Air-thru evaporator
- Self-contained design
- Refrigerant: R-134a
- Easily accessed modular refrigeration system flush mounted on side of cooler with all components outside the milk storage compartment
- Large cooling capacity to maintain the required storage temperature

- Condensate evaporator
- Operating temperature: 38°F (3°C)

### WARRANTY

- Standard limited one year compressor, 18 month labor and one year limited parts

## CAPACITY

MODEL	CASES WITH CARTONS				LOOSE CARTON (WITHOUT CASES)	
	13" x 13" x 11"H		19" x 13" x 11"H		1/2 PINT	1 PINT
	CASES	CARTONS	CASES	CARTONS		
MCATD-084S	8	352	4	288	864	432
MCATD-124S	12	528	8	576	1368	684
MCATD-164S	16	704	12	864	1800	900

## OPTIONS

- Extended four year compressor warranty



21720 South Wilmington Ave. • Suite 309 • Long Beach, CA 90810  
 P: 888-478-8600 • F: 310-513-8156 • www.koolstar.com

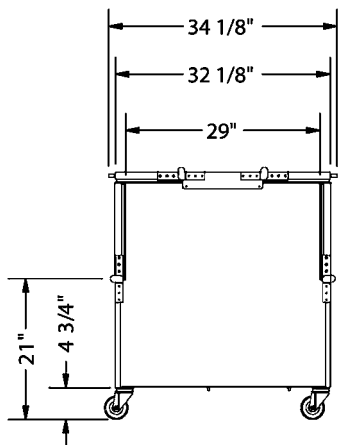


# MCATD SERIES AIR-THRU DUAL ACCESS MILK COOLERS

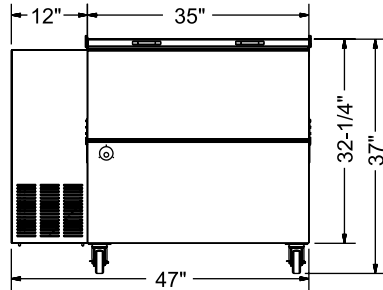
## TECHNICAL SPECIFICATIONS

MODEL	DIMENSIONS (in.)			DIMENSIONS (mm)			VOLTS	AMPS	UNIT H.P.	NO. OF FLOOR RACKS	CAP. CU. FT.	SHIP CU. FT.	SHIP WT. (LB/KG)
	L	D	H*	L	D	H*							
MCATD-084S	47	34 <sup>1</sup> / <sub>8</sub>	37	1194	845	940	115	7.1	1/3	2	13.0	43.3	250/114
MCATD-124S	61	34 <sup>1</sup> / <sub>8</sub>	37	1549	845	940	115	7.1	1/3	3	19.9	55.1	300/136
MCATD-164S	75	34 <sup>1</sup> / <sub>8</sub>	37	1905	845	940	115	7.1	1/3	4	25.6	67.1	350/159

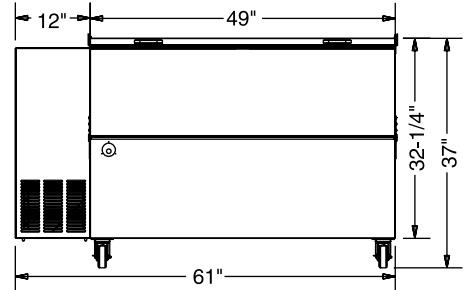
\*Height includes casters.



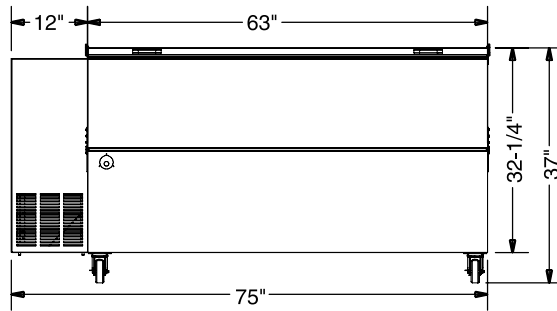
SIDE VIEW - ALL



MCATD-84S ELEVATION VIEW



MCATD-124S ELEVATION VIEW



MCATD-164S ELEVATION VIEW

## LISTINGS



## HOOKUP

Via plug in, 8 foot long flexible three wire 16/3 cord with molded plug.



## BID SPECIFICATIONS

Item no. MCATD \_\_\_\_\_  
Provide \_\_\_\_\_ ( ) Air-Thru Dual Access Milk Cooler(s), Kool Star model no. MCATD \_\_\_\_\_.

Milk cooler to be constructed of stainless steel on both interior and exterior and will be insulated with foamed-in-place polyurethane. It will be equipped with four swivel casters, two of which will be locking. Epoxy-coated heavy-duty floor

racks will also be standard as will an NSF-listed drain and thermometer.

Doors to be insulated and will have gaskets and chrome-plated hinges. In addition, doors will fold back and lock to safely stay open during use and will feature key locks.

The refrigeration system will feature an exclusive air-thru, self-contained design and will have a condensate evaporator.

The system will be a modular type flush mounted on side of cooler with all components outside the milk storage compartment. The refrigerant will be R-134a and the operating temperature will be 38°F (3°C).

Cooler to have standard limited one year compressor, 18 month labor and one year limited parts warranty.

Cooler to be UL and C-UL listed and UL EPH classified.

NOTE: Cabinet designed for optimum performance in air-conditioned area at 75°F ambient and 55% relative humidity. All specifications subject to change without notice.