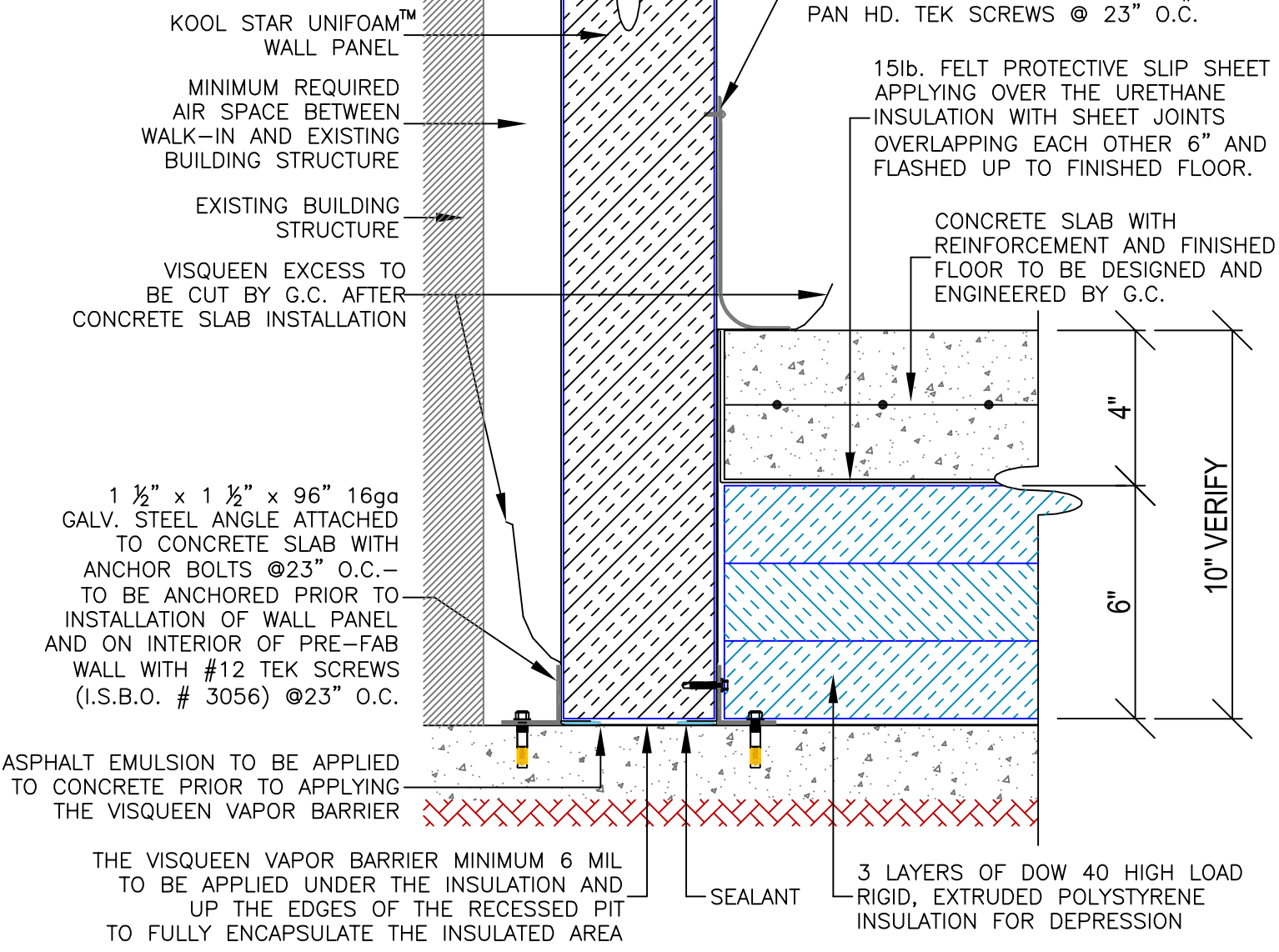
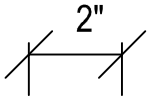


UNEXPOSED EXTERIOR

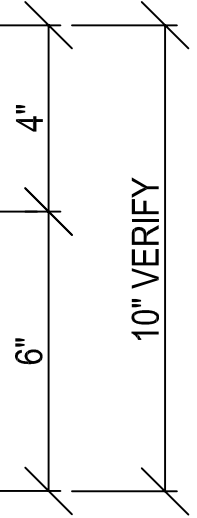


6" COVE BASE ON EXPOSED AREAS ATTACHED TO WALL PANEL WITH #8x5/8" PAN HD. TEK SCREWS @ 23" O.C.

15lb. FELT PROTECTIVE SLIP SHEET APPLYING OVER THE URETHANE INSULATION WITH SHEET JOINTS OVERLAPPING EACH OTHER 6" AND FLASHED UP TO FINISHED FLOOR.

CONCRETE SLAB WITH REINFORCEMENT AND FINISHED FLOOR TO BE DESIGNED AND ENGINEERED BY G.C.

1 1/2" x 1 1/2" x 96" 16ga GALV. STEEL ANGLE ATTACHED TO CONCRETE SLAB WITH ANCHOR BOLTS @23" O.C. - TO BE ANCHORED PRIOR TO INSTALLATION OF WALL PANEL AND ON INTERIOR OF PRE-FAB WALL WITH #12 TEK SCREWS (I.S.B.O. # 3056) @23" O.C.



ASPHALT EMULSION TO BE APPLIED TO CONCRETE PRIOR TO APPLYING THE VISQUEEN VAPOR BARRIER

THE VISQUEEN VAPOR BARRIER MINIMUM 6 MIL TO BE APPLIED UNDER THE INSULATION AND UP THE EDGES OF THE RECESSED PIT TO FULLY ENCAPSULATE THE INSULATED AREA

SEALANT

3 LAYERS OF DOW 40 HIGH LOAD RIGID, EXTRUDED POLYSTYRENE INSULATION FOR DEPRESSION



21720 S. Wilmington Ave. Suite # 309 * Long Beach, California 90810
Tel. (310) 952-8000 * Fax (310) 513-8156

Recessed Wall Panel to Subfloor Connection at Building Wall